

Family Entertainer With Pizazz on 4,173m²



4 Sunshine Way, Kingsthorpe

\$449,000

FEATURES

- 4 built-in bedrooms + study
- Extra large main bedroom
- Children's activity area
- Media room
- Stunning modern kitchen
- Extra large pantry
- Remote DLUG
- Undercover entertaining area
- 20,000 L rainwater tank
- 2kw solar (3kw inverter)
- Room for your dream shed
- 4,173m² pet friendly block
- General rates - \$548.88 1/2yr

Serious Livability...

This is seriously good value! With a fantastic family friendly floor plan including three separate living areas and a master bedroom that is best described as your own private retreat. The attention to detail is clearly evident.

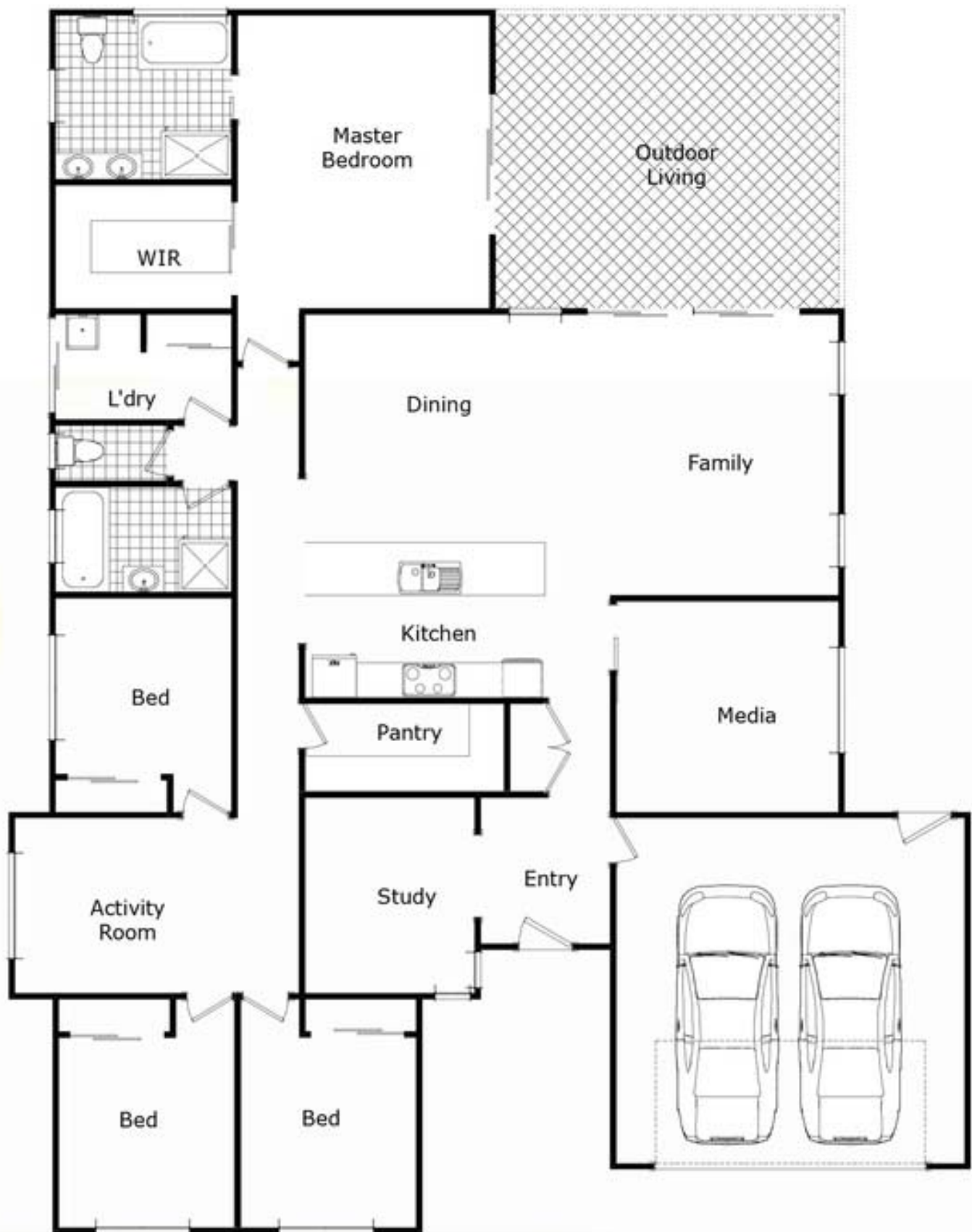
Plus over 1 acre of land so ample space for all the family plus the pad is already levelled to build your shed.

4  2  2 



Brendan Homan
Ph: 0419 188 176





Please Note: All care has been made to ensure accuracy of this plan. However, it is not a surveyed plan therefore dimensions and icons used are estimates only. This plan is for illustrative purposes and should be used as such by any prospective buyer. Produced by Open2view.com

4 Sunshine Way Kingsthorpe

RE/MAX[®]